

# Triangles Meet Shabby Chic



Fabric used in this quilt are from the Ginger Bliss II collection by Amy Butler for FreeSpirit Fabrics

## Fabric Requirements:

- Quilt Top 17 fat quarters
- Borders 2½ yards vertical stripe
- Binding 1 yard
- Backing 2½ yards
- Matilda's Own Wool Batting

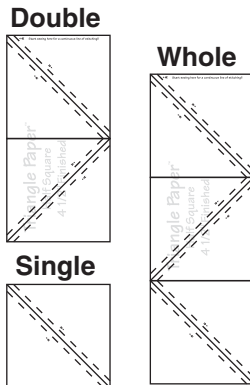
1 package 4½" Half Square Triangle Paper™

## Combinations:

1/2	- 3 Triangles	- 1 Double
2/3	- 3 Triangles	- 1 Double
3/4	- 3 Triangles	- 1 Double
4/5	- 4 Triangles	- 1 Double
5/6	- 5 Triangles	- 1 Whole
6/7	- 6 Triangles	- 1 Whole
7/8	- 7 Triangles	- 1 Whole + 1 Single
8/9	- 12 Triangles	- 2 Whole
9/10	- 9 Triangles	- 1 Whole + 1 Double
10/11	- 10 Triangles	- 1 Whole + 1 Double
11/12	- 11 Triangles	- 2 Whole
12/13	- 12 Triangles	- 2 Whole
13/14	- 10 Triangles	- 1 Whole + 1 Double
14/15	- 9 Triangles	- 1 Whole + 1 Double
15/6	- 8 Triangles	- 1 Whole + 1 Single
16/6	- 7 Triangles	- 1 Whole + 1 Single
16/4	- 6 Triangles	- 1 Whole
4/8	- 5 Triangles	- 1 Whole
9/1	- 3 Triangles	- 1 Double

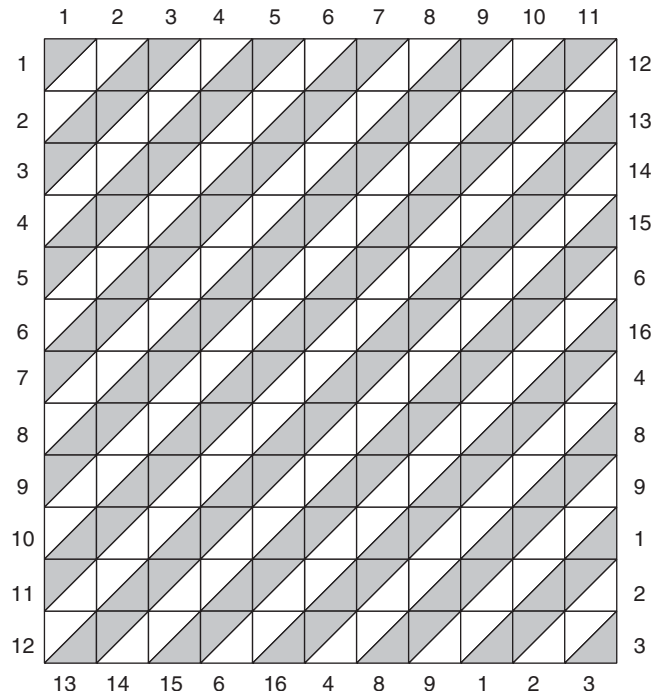
1. From each fat quarter, cut three 6½" x 17" sections. All the fabrics are cut this size to accommodate a whole sheet of paper. You will cut some of the paper into single and double sections.

A double section has 2 squares (4 triangles) and a single section has 1 square (2 triangles.) Cut 8 sheets of paper into single and double sections.



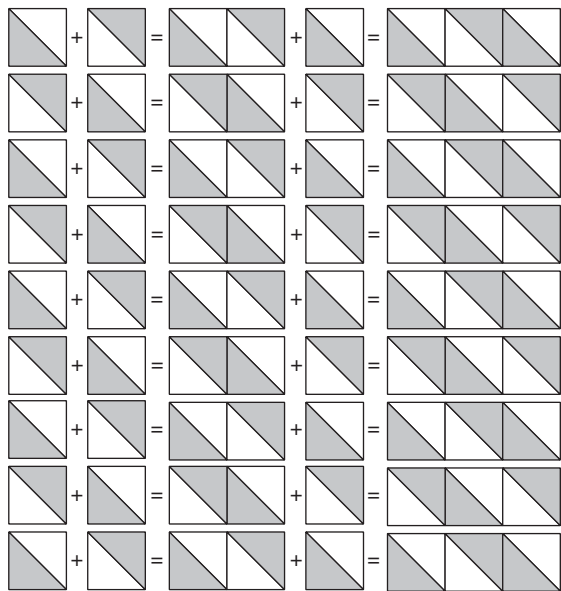
Following the charts to the right, which show the fabric pairs and placement in the quilt, layer designated fabrics right sides together. Place paper against wrong side of one fabric, stitch, cut, tear, press. The quilt requires 132 half square triangles. You may need to use a couple of single units for a double unit.

Before making triangles, audition your fabrics next to each other by folding the fabric into strips and lying it out on the diagonal. Move fabric around until you get a pleasing layout of color balance, texture, and value.



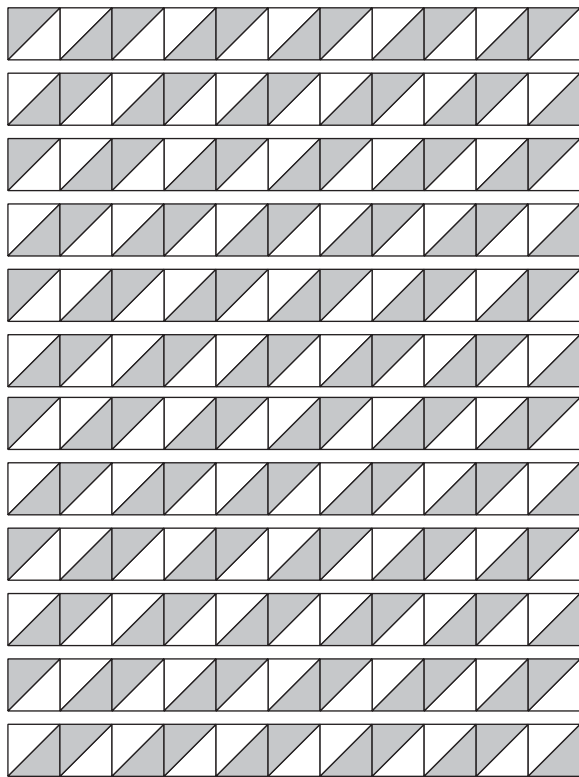
2. On a flannel wall or floor lay out the half square triangles. The quilt shown is 11 squares x 12 squares.

3. Sew squares together, chain piecing, as shown below. Press seams in opposite directions so they will nestle when the horizontal rows are sewn together.

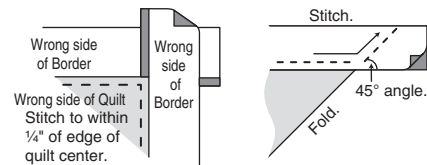


Continue adding squares until all rows have 11 squares across.

4. Sew the rows together. Give it a good press.



5. Decide what sections of the stripe you want to use. From striped fabric, cut 4 strips  $6\frac{1}{2}$ " x lengthwise of fabric. Stitch strips to sides and top and bottom of quilt, stopping and starting  $\frac{1}{4}$ " from edges. Miter border strips to finish. Pull quilt center out of the way, place border strips right sides together and stitch from seam intersection to outside edge at a  $45^\circ$  angle. Repeat for all four sides.



6. Layer top, wool batting and backing. I quilted this using the serpentine stitch on my sewing machine. I elongated it a bit, and centered (or tried to) it over the seams.

7. Binding strips were cut  $2\frac{1}{2}$ " wide. I used one of the fabrics with the circles on it because it gave lots of movement to the binding.

Quilttime  
9640 Tropical Parkway  
Las Vegas, NV 89149  
702-658-7988

This pattern is provided free for use with  $4\frac{1}{2}$ " Half Square Triangle Paper. It may be copied and shared, but not sold for commercial use.